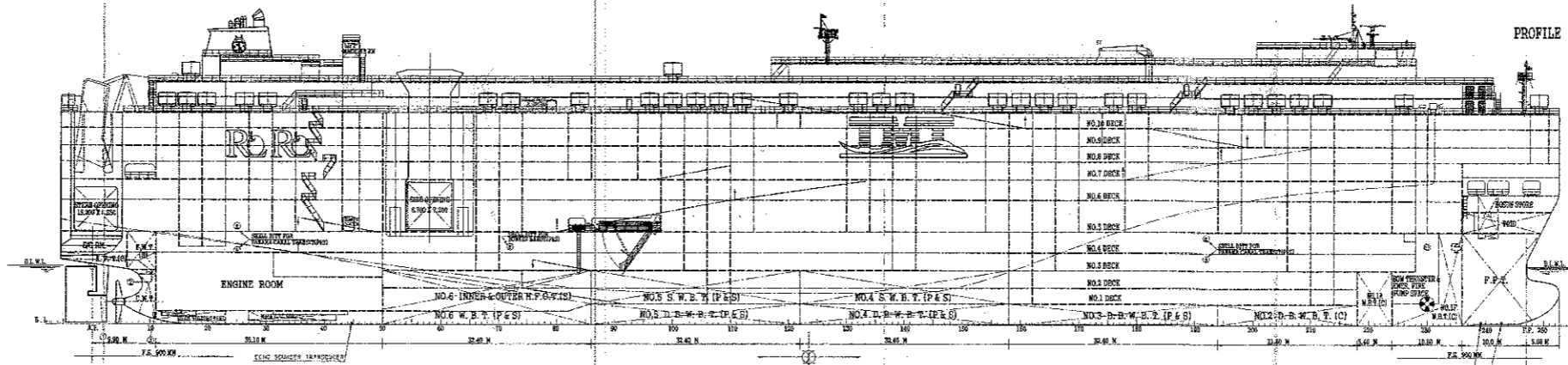
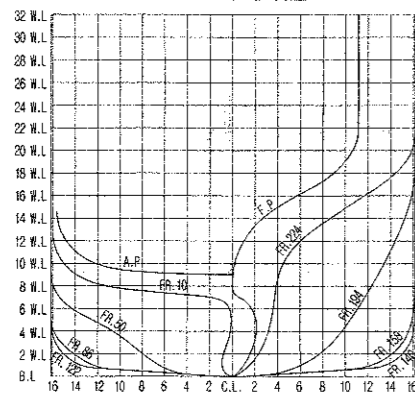


DOCKING PLAN

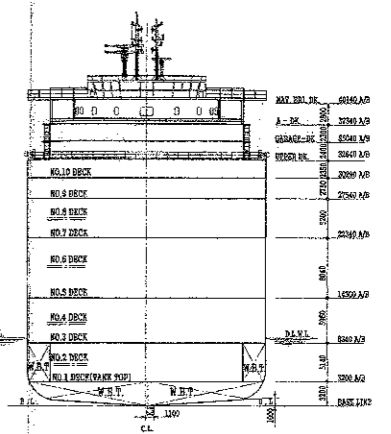
7.600 UNIT ROLL-ON ROLL-OFF CAR CARRIER

PLAN HISTORY				
DATE	REV. NO.	DESCRIPTION	PREPARED BY	APPROVED BY
2004-11-25	001	ORIGINALLY PREPARED FOR ESTIMATION	S. K. LEE	S. K. LEE
2004-05-10	1	ISSUED FOR FINISHED PLAN	S. K. LEE	S. K. LEE

BODY PLAN, SCALE 1:200

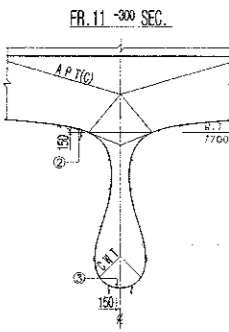


PROFILE

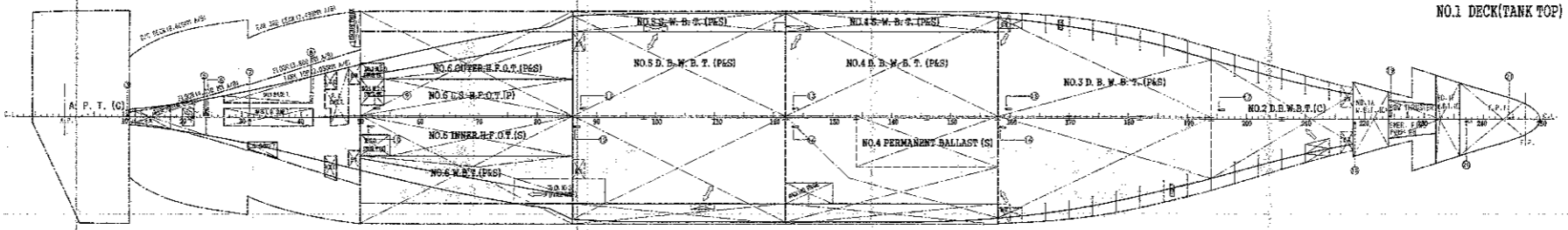
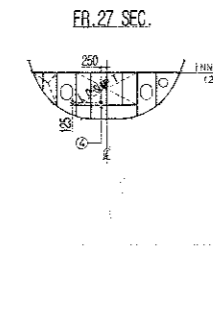


MIDSHIP SECTION

DETAIL 2, 3, SCALE 1:100

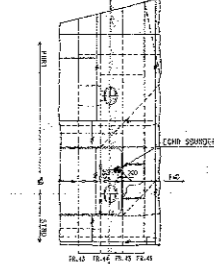


DETAIL 4, SCALE 1:100

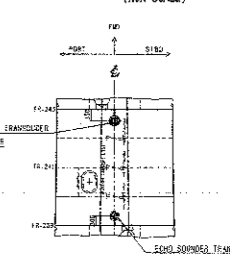


NO.1 DECK (TANK TOP)

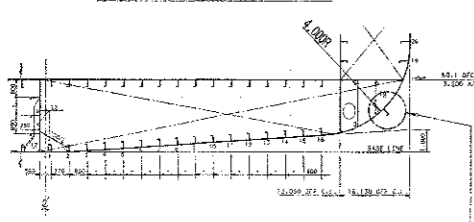
ARR'G'T OF ECHO SOUNDER TRANSDUCER (E/R AREA) (NON SCALE)



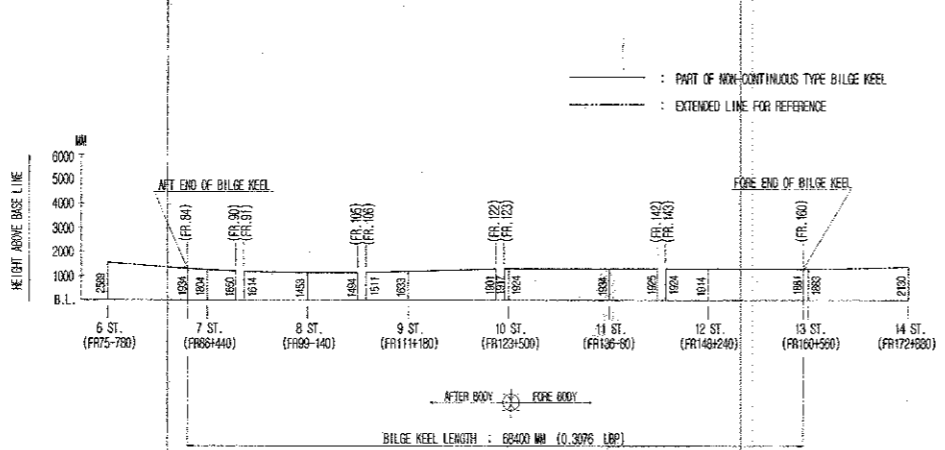
ARR'G'T OF ECHO SOUNDER & SPEED LOG TRANSDUCER (FORE SHIP) (NON SCALE)



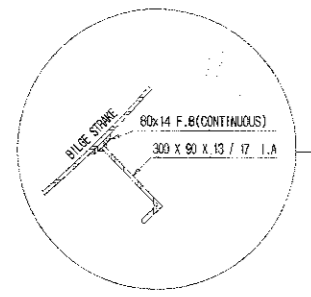
MIDSHIP SECTION, SCALE 1:100



LINE OF BILGE KEEL, NON-SCALE



DETAIL OF BILGE KEEL, SCALE 1:40



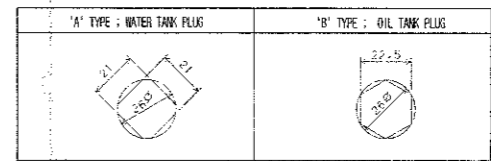
LIST OF BOTTOM PLUG

PLUG NO.	FR. NO.	OFF C.L. (FRS)	COMPARTMENT	ABBREVIATION	PLUG TYPE
①	1	0	BLUDDER HORN	'NO WORK'	A
②	104200	SEE DET	P AFTER PEAK TANK	A P T	A
③	11-300	SEE DET	P COOLING WATER TANK	C W T	A
④	27	SEE DET	P MAIN LUBRICATING OIL SUMP TANK	'NO WORK'	B
⑤	24-300	250	P BILGE HOLDING TANK	BLG HOLD T	B
⑥	24+300	250	P COFFERDAM	C D	A
⑦	31+300	300	S COFFERDAM	C D	A
⑧	42-300	2405	P OILY BILGE TANK	O B L G T	B
⑨	52+300	1300	P NO.6 WATER BALLAST TANK	6 W B T	A
⑩	51+300	1300	S NO.6 WATER BALLAST TANK	6 W B T	A
⑪	57+300	1300	P NO.6 WATER BALLAST TANK	5 D B W B T	A
⑫	60+300	1300	S NO.5 DOUBLE BOTTOM WATER BALLAST TANK	5 D B W B T	A
⑬	123+300	1300	P NO.4 DOUBLE BOTTOM WATER BALLAST TANK	4 D B W B T	A
⑭	123+300	1300	S NO.4 DOUBLE BOTTOM WATER BALLAST TANK	4 D B W B T	A
⑮	159+300	1300	P NO.3 DOUBLE BOTTOM WATER BALLAST TANK	3 D B W B T	A
⑯	159+300	1300	S NO.3 DOUBLE BOTTOM WATER BALLAST TANK	3 D B W B T	A
⑰	185+300	1300	P NO.2 DOUBLE BOTTOM WATER BALLAST TANK	2 D B W B T	A
⑱	216+300	500	S NO.1 AFTER WATER BALLAST TANK	1 A W B T	A
⑲	224+300	400	P NO.1 FORE WATER BALLAST TANK	1 F W B T	A
⑳	237+100	250	S FORE PEAK TANK	F P T	A
㉑	244+300	100	P FORE PEAK TANK	F P T	A

PAINTING AREAS

DESCRIPTION	LOCATION	AREA (M2)
FLAT BOTTOM	UP TO BILGE KEEL LEVEL	4,500
SIDE BOTTOM	UP TO DESIGN DRAFT, 9.0M	4,800
TOP SIDE	FROM DESIGN DRAFT TO NO.8 DECK	7,880
SUPER STRUCTURE	FROM NO.8 DECK TO UPPER DECK	5,850

TYPE OF PLUG



PRINCIPAL PARTICULARS

LENGTH O. A. 232.39 M
 LENGTH B. P. 222.40 M
 BREADTH M.L.D. 32.26 M
 DEPTH M.L.D. 32.64 M
 DRAUGHT (DESIGN) M.L.D. 9.00 M
 DRAUGHT (SCANTLING) M.L.D. 10.00 M

FREEBOARD : "B" TYPE
 FLAG : PANAMA
 CLASS : DET NORSKE VERITAS, +1A1, CAR CARRIER/RO/RO
 EO, MCOK, TMON
 MAIN ENGINE : ONE (1), HYUNDAI B&W 8S80ME-C8
 MCR : 19040 KW X 105.0 RPM
 NCR : 17136 KW X 101.4 RPM

SHEET NO. 001 TOTAL SHEETS 001 DATE 2004-11-25	SHIP NO. S398/399/400 S443 SHIP NAME 7,600 UNIT ROLL-ON ROLL-OFF CAR CARRIER	DRAWN BY S. K. LEE CHECKED BY S. K. LEE APPROVED BY S. K. LEE	TITLE DOCKING PLAN SCALE 1:200 DATE 2004-11-25
--	---	---	--